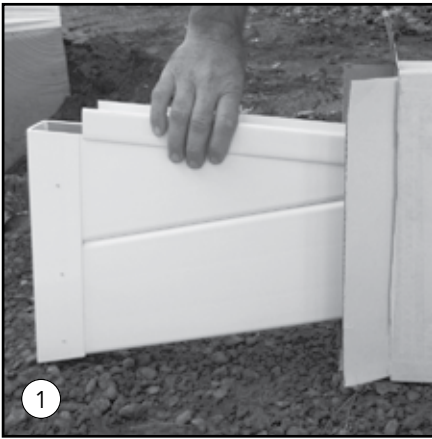
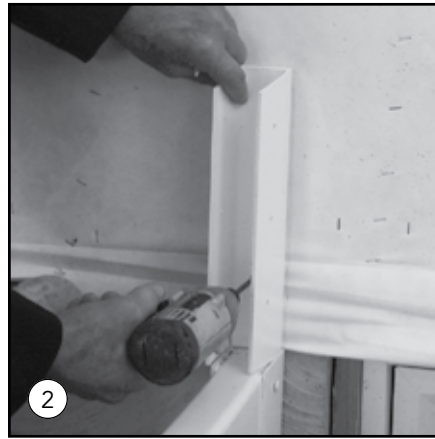


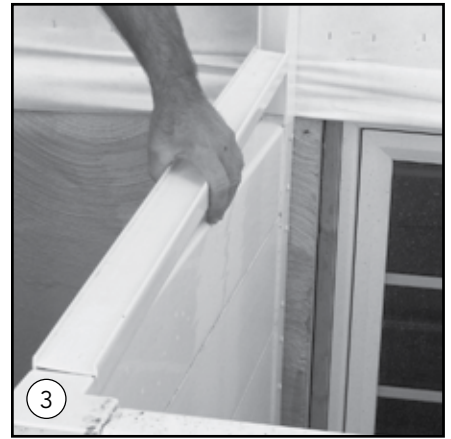
Cover Assembly Instructions



1 Remove assembled side panels from package.



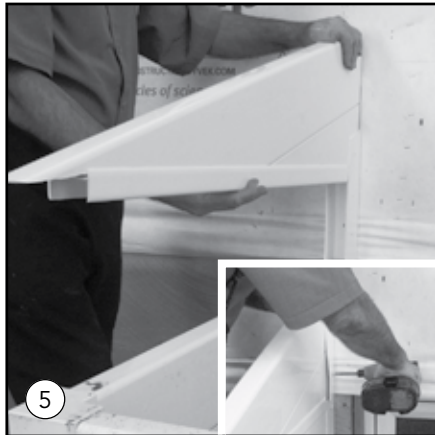
2 With the rear mounting plate centered over the well side and flush to the outside building wall secure with 2 Tapcons (3/16 x 1-3/4) while ensuring that the plate remains plumb.



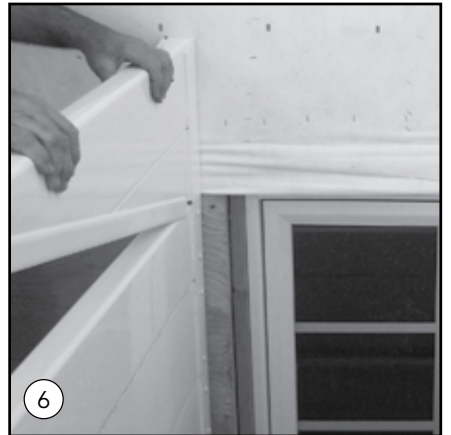
3 Place H channel over well wall (long ears). This channel should fit between wall plate and corner connector. Remove. Trim if necessary.



4 Slide H channel into side panel (short ears). Insert side panel into back plate. The nose should be flush with the front outside wall of the well.



5 Secure panel to wall plate with 6 #10 x 3/4" white screws. Secure panel to well with 6 #8 x 1" white screws through long ears of H channel and 6 #8 x 1" white screws through short ears of H channel.



6 Repeat steps 2 to 5 for opposite side.



7 With side panels mounted, center header allowing approximately 3/4" overhang on each side, and secure with 2 3" SS screws at each end. Use the white plugs to conceal the holes.



8 Brace the glass cap up to the header with the hinges facing up at the top. With the glass cap flush with the header edge, screw the hinge plate to the header with the black 1-1/2" screws.



9 A header block is provided in the side frame box. Install on the bottom center, tight up against the header (to provide header support in the center).